

DRAWING NUMBER
52/32

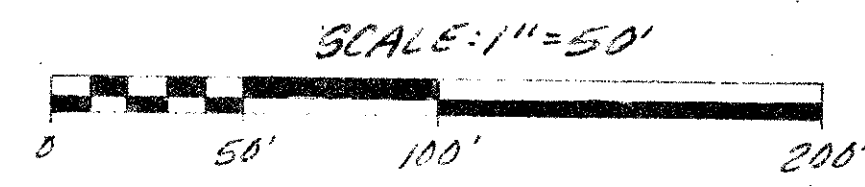
DRAWING NUMBER
PLAN HOLD CORPORATION • IRVINE, CALIFORNIA
RECORDED BY NUMBER 07549

DRAWING NUMBER
PLAN HOLD CORPORATION • IRVINE, CALIFORNIA
RECORDED BY NUMBER 07549

DRAWING NUMBER
PLAN HOLD CORPORATION • IRVINE, CALIFORNIA
RECORDED BY NUMBER 07549

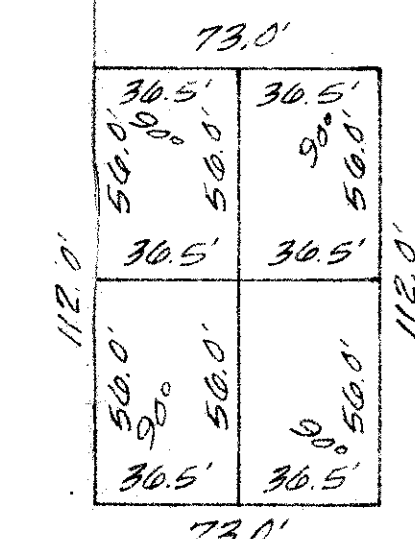
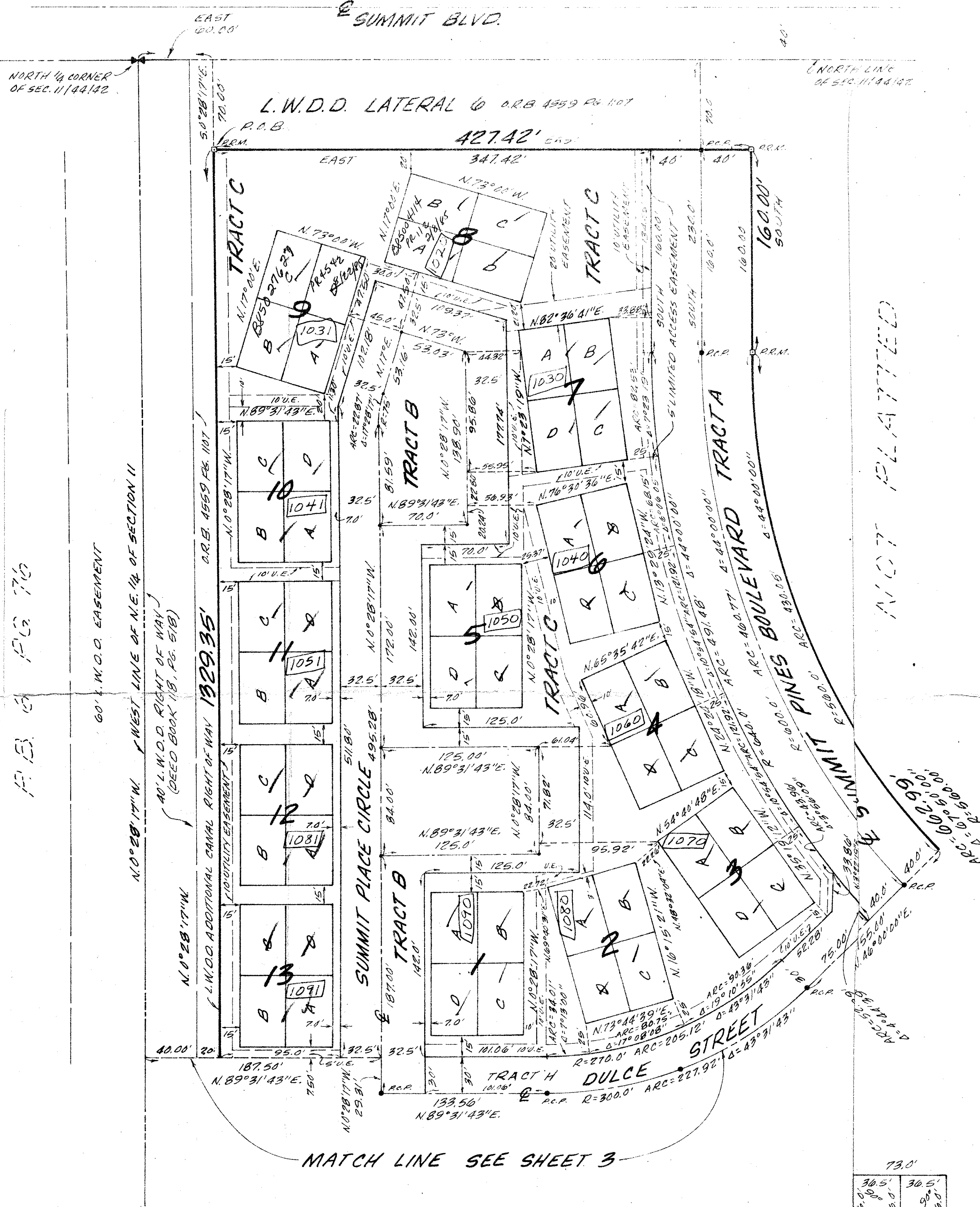
CANNONGATE PLAT 1A REC 32 PG 139

PLAT OF
SUMMIT PINES UNIT ONE
A.P.U.D.
SECTION 11, TOWNSHIP 44 SOUTH, RANGE 42 EAST
PALM BEACH COUNTY, FLORIDA
SHEET 2 OF 4 SHEETS



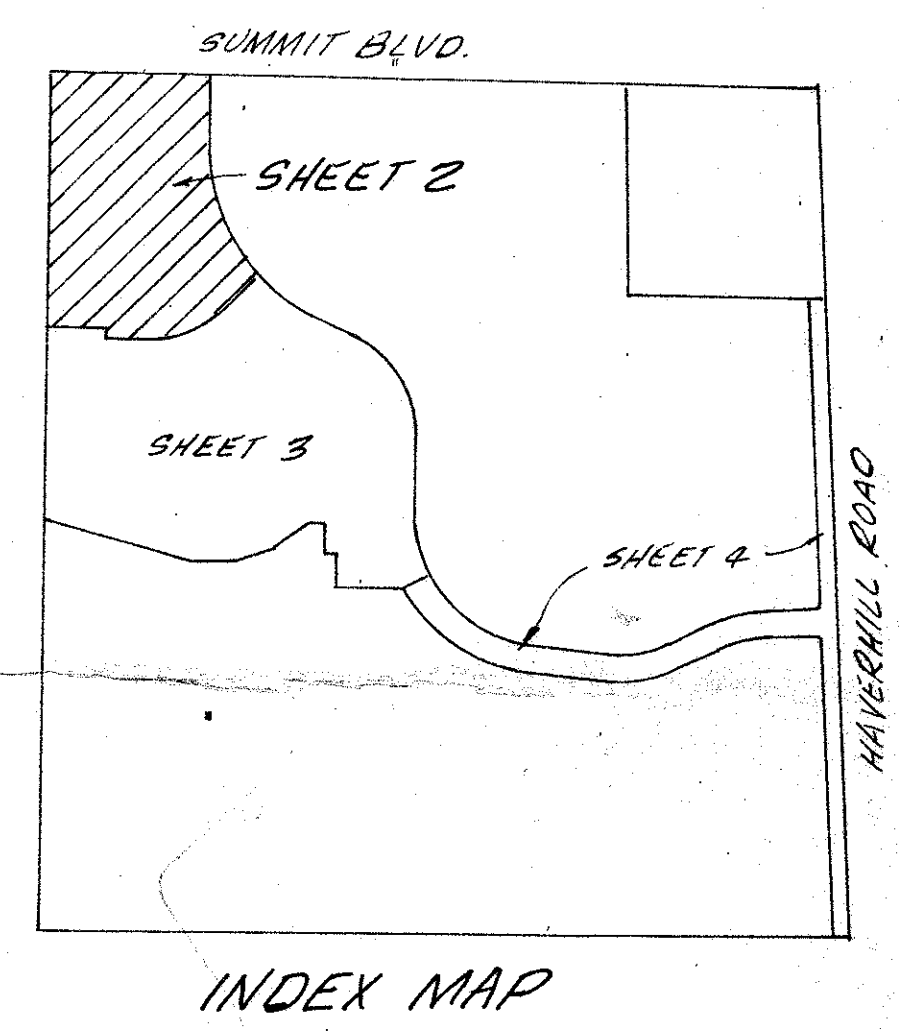
52
32

MODEL LAND CO. SUB. OF N 1/2 OF SEC 11
P.B. 3 PG 76



TYPICAL LOT
DETAIL

- SURVEYOR'S NOTE:**
- 1. ALL LOT TIES ARE 90° OFF REFERENCE LINES UNLESS SHOWN OTHERWISE.
 - 2. ALL LOT TIES TO CURVES ARE RADIAL LINES UNLESS SHOWN OTHERWISE.
 - 3. "U.E." = UTILITY EASEMENT.



0435-300
10/24/85
11/4/82
B. 84-160

SUBDIVISION * Summit Pines 1	
BOOK 52	PAGE 32
FLOOD ZONE B	FLOOD MAP * 1C50
QUAD * 32	ZONING RS
SE PUD	ZIP CODE 33406
PUD NAME SUMMIT PINES	

Summit Pines #1 52/32
O'BRIEN, SUITER & O'BRIEN, INC.
ENGINEERS, SURVEYORS, LAND PLANNERS
2601 NORTH FEDERAL HIGHWAY, DELRAY BEACH, FLORIDA

DATE JAN. 1985	SCALE 1"=50'
FIELD BOOK M 43	SHEET 2 OF 4
	NO. 84-7